



14 Thornwood Gardens., Gateshead, NE11 0DB

Offers Over £295,000

Nestled in the desirable Thornwood Gardens, Lobley Hill, this beautifully refurbished and greatly extended semi-detached house is a true gem. Boasting four spacious bedrooms and two modern bathrooms plus a ground floor w.c., this home is perfect for families seeking comfort and style. As you enter, you are welcomed by a charming entrance porch that leads into a bright and airy lounge. This inviting space features a stunning media wall complete with a built-in fire, creating a warm atmosphere for relaxation. The lounge seamlessly flows into a spacious kitchen, which is the heart of the home. Here, you will find a stylish feature island with a seating area, ideal for casual dining or entertaining guests. The kitchen is equipped with built-in appliances and benefits from French doors that open up to the rear garden, allowing for a delightful indoor-outdoor living experience. The ground floor also includes a convenient utility room and a W.C., adding to the practicality of the layout. Upstairs, the property offers four well-proportioned bedrooms, with the main bedroom featuring an en suite shower room, providing a private retreat for the homeowners. Outside, the property boasts a garage and a driveway, providing ample parking for two vehicles. The rear garden is a lovely space for outdoor activities and relaxation, with a large decked patio area. perfect for enjoying the warmer months. This stunning home combines modern living with thoughtful design, making it an ideal choice for those looking to settle in a vibrant community. With its excellent amenities and transport links nearby, this property is not to be missed.

ENTRANCE HALLWAY

LIVING ROOM

16'0" x 15'9" (4.89m x 4.82m)



DINING KITCHEN

16'7" x 16'4" (5.08m x 4.98m)



UTILITY ROOM

11'3" x 9'10" (3.43m x 3.00m)



GROUND FLOOR W/C



FIRST FLOOR LANDING

MAIN BEDROOM

15'3" x 10'4" (4.67m x 3.16m)



EN-SUITE

6'9" x 5'8" (2.08m x 1.73m)



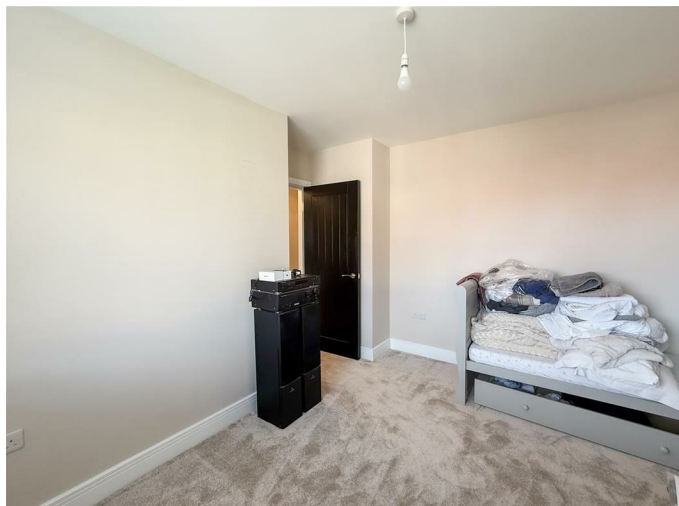
BEDROOM TWO

13'10" x 13'5" (4.23m x 4.11m)



BEDROOM THREE

12'3" x 11'6" (3.75m x 3.52m)



BEDROOM FOUR

10'6" x 9'0" (3.21m x 2.75m)



FAMILY BATHROOM

7'8" x 7'8" (2.35m x 2.35m)



EXTERNAL



GARAGE

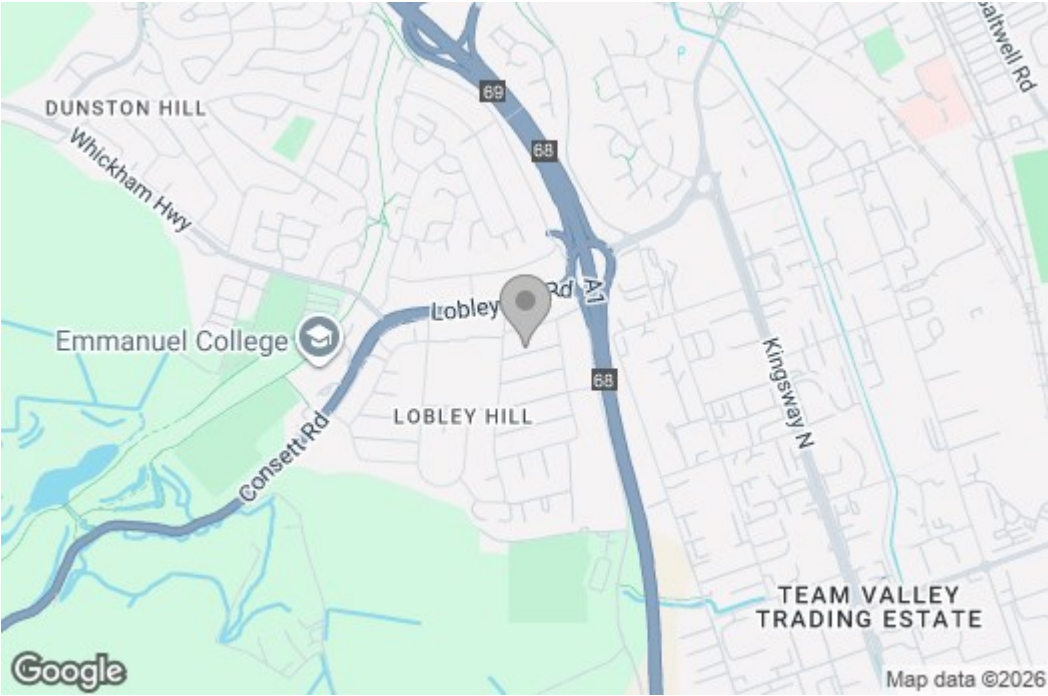
17'9" x 10'6" (5.43m x 3.22m)

Property disclaimer

IMPORTANT NOTE TO PURCHASERS: We endeavour to make our sales particulars accurate and reliable, however, they do not constitute or form part of an offer or any contract and none is to be relied upon as statements of representation or fact. The services, systems and appliances listed in this specification have not been tested by us and no guarantee as to their operating ability or efficiency is given. All measurements have been taken as a guide to prospective buyers only, and are not precise. Floor plans where included are not to scale and accuracy is not guaranteed. If you require clarification or further information on any points, please contact us, especially if you are travelling some distance to view. Fixtures and fittings other than those mentioned are to be agreed with the seller. We cannot also confirm at this stage of marketing the tenure of this house.

Floor Plan

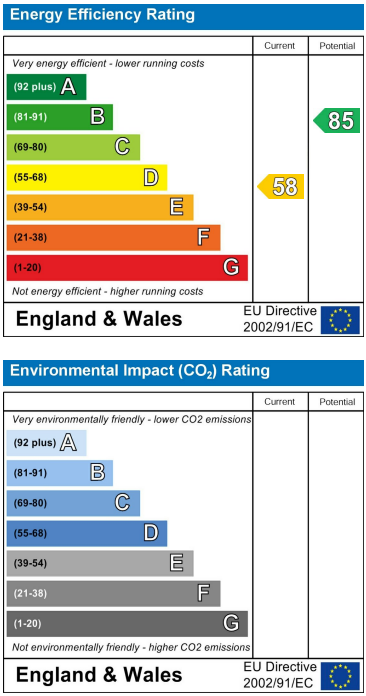
Area Map



These particulars, whilst believed to be accurate are set out as a general outline only for guidance and do not constitute any part of an offer or contract, purchaser should not rely on them as statements of representation of fact, but must satisfy themselves by inspection or otherwise as to their accuracy. No person in this firm's employment has the authority to make or give an representation or warranty in respect of the property.

429 Durham Road
Gateshead
NE9 5AN

Energy Efficiency Graph



0191 4874211
home@gordon-brown.co.uk
www.gordon-brown.co.uk